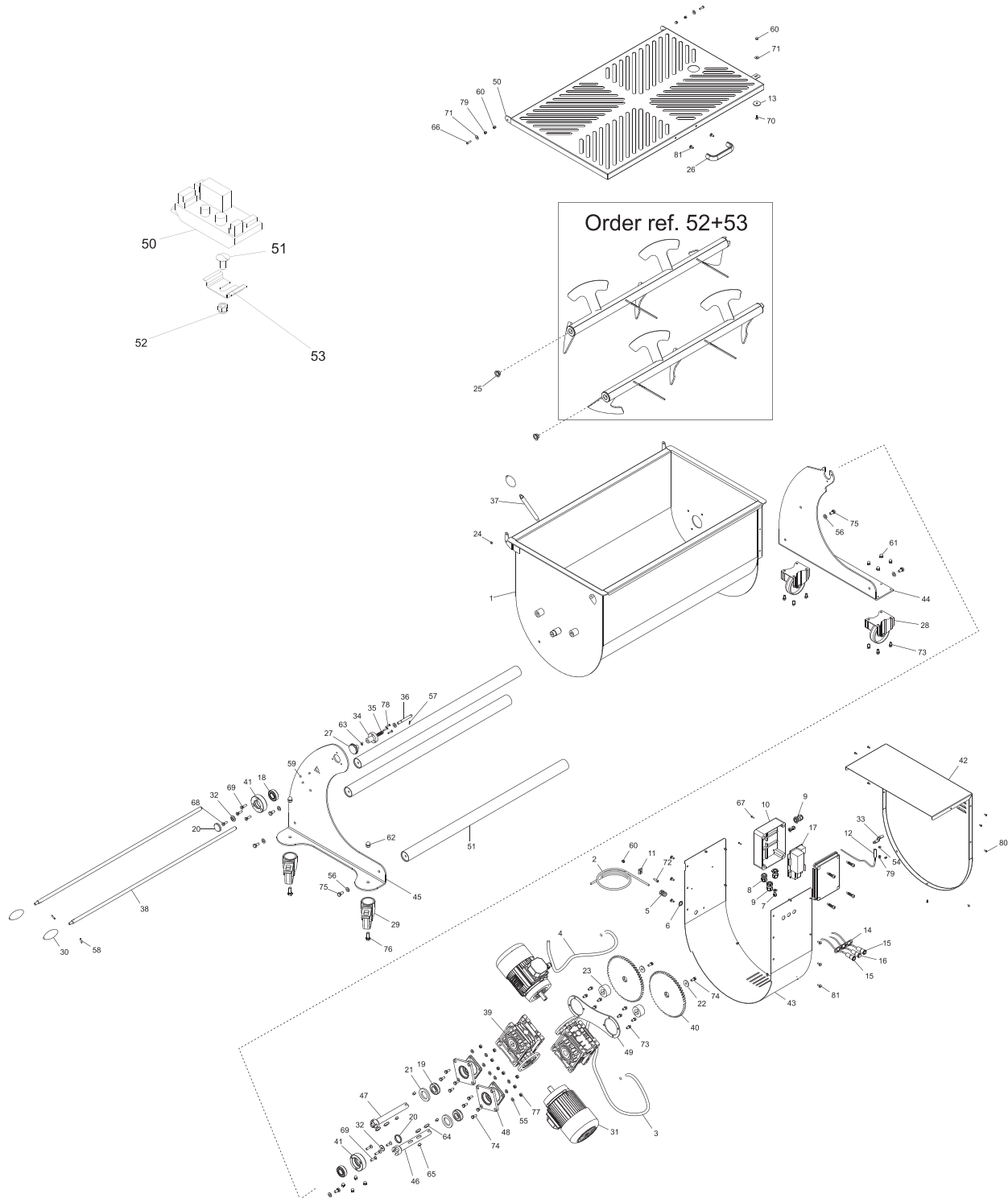


# Parts Breakdown

Model **MM-IT-0180** 46149



# Parts Breakdown

## Model MM-IT-0180 46149

Item No.	Description	Position	Item No.	Description	Position	Item No.	Description	Position
AE727	Cot Inox ME 180 Evo BIALB for 46149	1	78634	Knob for 46149	30	62643	Flat Washer DIN 125 D 6 for 46149	54
AE728	Fror Cable 4x1.50 for 46149	2	AE731	Engine Mixing kg.180 BIA HP3 380/60 for 46149	31	62644	Flat Washer DIN 125 D 8 for 46149	55
AE729	Power Cable TF TC BZ Engine for 46149	3	61590	Washer SO 1650 Inox for 46149	32	62645	Flat Washer DIN 125 D 10 for 46149	56
62602	Power Lead Motor TF/1.5 for 46149	4	61587	Door Support for Microswitch for 46149	33	62646	Elastic Spine DIN 1481 3x18 for 46149	57
61604	Strain Relief + Nut for 46149	5, 8	61569	Boat Stops Crade for 46149	34	62647	Elastic Pin DIN 1481 5x20 for 46149	58
61603	Nut Ott.Nich.PG 11 for 46149	6	61571	Spring for 46149	35	62648	Blind Nut DIN 1587 M5 for 46149	59
62605	Plastic Cable Gland PG7 for 46149	7	61570	Pin for 46149	36	61583	Nut DIN 1587 M6 for 46149	60
62606	PG 11 Plastic Cable Gland for 46149	9	61564	Lever Rod for Container Overturning for 46149	37	62650	P Nut DIN 1587 M8 for 46149	61
61549	Box GW 44207 for 46149	10	AE732	Shovel IX IP 180kg Double-Shaft for 46149	38	62651	Blind Nut DIN 1587 M12 for 46149	62
61608	Terminal Comb. BZ for 46149	11	AE733	Reducer MRV 063 B14 R = 49 ME for 46149	39	62652	Nut ES. DIN 439 M10 Low for 46149	63
37258	Microswitch SO Inox for 46149	12	61605	Ring Gear ME 80 Evo for 46149	40	62653	Feathers DIN 6885 / A 8x7x28 for 46149	64
37260	Magnet M634 for 46149	13	61585	Shaft Support SX Evo BIALB for 46149	41	62654	Feathers DIN 6885 / AB 8x7x16 for 46149	65
AE730	Mascher. Three Puls. Acc. TC-ME H=36 for 46149	14	61588	Motor Cover ME 120 Evo BIALB for 46149	42	62655	Screw TBEI ISO 7380 M6x25 for 46149	66
60396	Stainless Steel On Button with Lamp for 46149	15	61584	Carter Band Mot. ME 120 Evo BIALB for 46149	43	AE740	Screw Autof.TC + DIN 7981 D 3.5x16 for 46149	67
60397	Stainless Steel Off Button for 46149	16	61600	Base DX Rid. ME 120 Evo BIALB for 46149	44	62657	Screw TSPEI DIN 7991 M8x20 for 46149	68
41224	Circuit Board R3+Autom EQ for 46149	17	61599	Base SX ME 120 Evo BIALB for 46149	45	62658	Screw TSPEI DIN 7991 M8x30 for 46149	69
61586	Bearing 6205 ZZ for 46149	18	61595	Transc. Pin FEMM L=220 M and 120 Evo for 46149	46	62659	Screw TSP TORX DIN 7991 M6x16 TX30 for 46149	70
61597	Bearing Reg. SP 7205 ME 80 Evo for 46149	19	61598	Transc. Pin MASC L=220 ME 120 Evo for 46149	47	62660	Washer F Wide DIN 9021 D 6x18 for 46149	71
61589	Cap 40/7/C Pulley 1C SO1650 for 46149	20	AE734	Flange Motorid for 46149	48	62661	Hex.Socket Head Cap Screw M6x20 for 46149	72
61596	Gasket 40-62-7 for 46149	21	61606	Bracket Lock Gear ME 120 Evo for 46149	49	62662	Screw TE DIN 933 M8x16 T.F. for 46149	73
61610	Zinc Washer M8x30 H4 for 46149	22	62670	B Overload Protection EQ for 46149	50	62663	X.Screw DIN 933 M8x20 for 46149	74
61607	Bushing ME 80 Evo for 46149	23	AE735	Bathtub Lid ME 180 Evo BIALB for 46149	50	62664	Screw TE DIN 933 M10x20 T.F. for 46149	75
61609	Door Screw 10x6x4 ME BA Evo for 46149	24	60080	Screw Poeliers M5x12 for 46149	51	62665	Screw TE DIN 933 M12x30 T.F. for 46149	76
62621	Bush Flange JFM-1622-12 TCM-ME for 46149	25	AE736	Union Tube Bases ME 180 Evo BIALB for 46149	51	62666	Hex.Nut DIN 934 M8 for 46149	77
66642	Handle New Style/for Side of Container for 46149	26	60079	Self-Locking Nut ES DIN 982 M5 High for 46149	52	62667	Flathead CSK Screw DIN 963 M5x25 for 46149	78
79656	Knob for Fixing Container for 46149	27	AE737	Female Shovel ME 180 Evo BIAL for 46149	52	62668	Self-Lock Nut ES DIN 982 M6 High for 46149	79
61556	Stainless Steel Non-Swivel.Caster D.100 for 46149	28	AE738	DIN Guide Omega H.7mm L=20mm for 46149	53	62669	Poeliers M4x10 Screw for 46149	80
61579	Mobile Wheel with Brake D 100 C/Perno for 46149	29	AE739	Male Shovel ME 180 Evo BIALB for 46149	53	60081	Screw Poeliers M6x10 for 46149	81